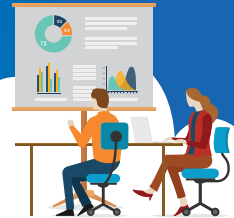


INSURITY CLAIMS SOLUTIONS

at a Glance

If every policy is a promise, then claims is the service that fulfills it. No matter how challenging a transformation may seem, Insurity has solutions to simplify the journey. Our comprehensive, multi-line solution for P&C claims management offers:



The Capabilities You Need

- ▶ **Leading Cloud Platform.** The market's most advanced cloud operations are secure, scalable and reliable.
- ▶ **Flexibility.** Configure business rules for task and workflow automation, data fields, screens, role-based security, dashboards, reports, and more.
- ▶ **Scalability.** Handle large volumes of transactions for enterprise-grade deployments.
- ▶ **Seamless integration.** Easily interface with other applications, pre-built connectors, batch processing, and web services. Custom integrations are also supported.

The Functionality You Want

- ▶ **Out-of-the-box functionality.** Strong speed-to-value for any insurer's claims environment.
- ▶ **Elegant design and intuitive, user-friendly automation tools.**
- ▶ **Secure, scalable, high-performance infrastructure.**
- ▶ **Data mining and predictive analytics.**

The Outcomes You Expect

- ▶ **Improved productivity and focus.**
- ▶ **Increased efficiency.**
- ▶ **Elimination of heavy manual processing and duplication throughout claims lifecycle.**
- ▶ **Rapid implementation.** Agile approach typically delivers an initial rollout in 6 to 9 months. Avoid project delays and stay on-budget.
- ▶ **Highly advanced system at a reasonable investment level.**

Why Insurity

- ▶ **Industry leader for over 30 years.**
- ▶ **More cloud clients than any other provider in the commercial P&C space.**
- ▶ **Deep SaaS experience.**
- ▶ **Speed-to-value leader.**
- ▶ **Out-of-the-box commercial lines content.**
- ▶ **End-user configurability.**
- ▶ **Integrated data analytics and visualization.**
- ▶ **Proven global capabilities.**



To learn more about Insurity's claims solutions, [click here](#).



www.insurity.com 866.476.2606